

## 2AC VoltAlert™

Always on for faster, safer voltage testing.

### Technical Data



2AC is the latest product in the VoltAlert™ ac non-contact voltage tester family from Fluke. The 2AC is pocket-sized and easy to use. Just touch the tip to a terminal strip, outlet, or cord. When the tip glows red you know there's

voltage in the line. Electricians, maintenance, service and safety personnel, as well as homeowners, can quickly test for energized circuits and defective grounds on the factory floor, in the shop, or at home.



#### Features and benefits

- **NEW!** Always on, using special low-power circuitry to sustain battery life and ensure your 2AC is always ready
- **NEW!** Innovative 'Battery Check' button function ensures battery is in good condition\*
- Voltage detection from 90 to 1000 V ac, suitable for a wide range of residential, commercial and industrial needs
- Category IV – 1000 V overvoltage rated product for best in class user protection
- Integrated clip design, optimized for pocket storage
- Powered by 2 AAA batteries (included)
- Fluke ruggedness and reliability, two-year warranty

\*Use of Battery Check function is optional and for convenience only. It is not intended as a substitute for checking the unit on a known live source before and after use.

#### Specifications

##### Safety compliance

Meets IEC 61010-1:2001, UL 61010-1 (2nd ed.), CAN/CSA-C22.2 No. 61010-1-04, and ISA-82.02.01, Pollution Degree 2

##### EMC compliance

Meets IEC 61326-1:2006

##### Operating

90 V ac to 1000 V ac

##### Temperature

Operating: -10 °C to 50 °C (14 °F to 122 °F)  
Storage: -10 °C to 50 °C (14 °F to 122 °F)

##### Humidity

0 % to 95 % (0 °C to 30 °C, 32 °F to 86 °F),  
0 % to 75 % (30 °C to 40 °C, 86 °F to 104 °F),  
0 % to 45 % (40 °C to 55 °C, 86 °F to 131 °F)

##### Altitude

2000 m (CAT IV 1000 V)

##### Cleaning

Clean with damp cloth

##### Battery life

Typical battery life of greater than one year

##### Warranty period

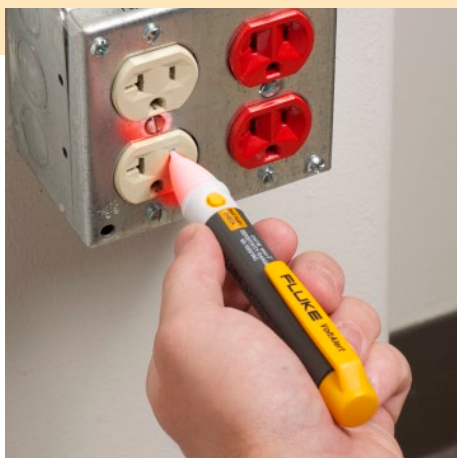
Two-years

**Ordering information**

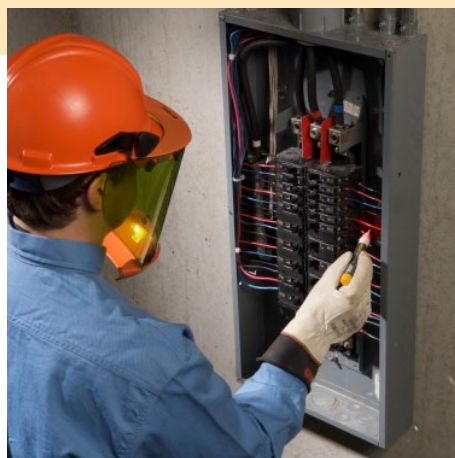
**FLK2AC/90-1000V** Non Contact Voltage Detector, 90-1000 V

**FLK2AC/90-1000V5PK** Non-Contact Voltage Detector, 90-1000 V, 5-Pack

**Includes:** Two AAA batteries, application guide, and instruction sheet



Outlet socket



Electrical panel



Junction box

**Others in the VoltAlert Family**



**1AC-II with beeper, on-off and self test**



**LVD2, with flashlight and dual sensitivity**

<b>Features</b>	<b>2AC</b> 90-1000 V ac CAT IV 1000 V	<b>1AC-II**</b> 90-1000 V ac CAT IV 1000 V	<b>LVD2</b> 90-600 V ac CAT IV 600 V
Voltage Detection	■	■	■
Battery Included	■	■	■
Battery Check	■		
On/Off Button		■	■
Voltbeat™		■	
Audible/Silent		■	
Dual Sensitivity			■
LED Flashlight			■

\*\*Also available in 20-90 V low voltage version as 1LAC-II.

**Fluke.** Keeping your world up and running.®

Fluke Corporation.  
Specifications subject to change without notice.  
Printed in U.S.A. 8/2010 3846474A D-EN-N

Modification of this document is not permitted without written permission from Fluke Corporation.